

SINGLE PHASE ODP

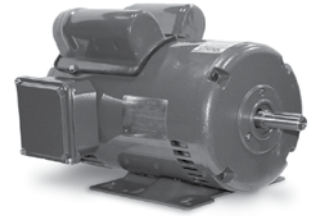
FEATURES

NEMA
Premium

UL

CE

Effective 02-09-23
Supercedes All Previous



MODEL: SINGLE PHASE ODP

TYPE: BSGS39

APPLICATIONS

- Agricultural Industry
- Pumps
- HVAC Equipment
- Compressors

PRODUCT OVERVIEW

- 1/4-3 HP
- Horizontal F1 Mount
- Open Drip Proof Design
- 60Hz, 115/230V or 230V or 208V 1.0 S.F.; Single Phase
- 3600, 1800 RPM

DESIGN FEATURES

- 1.15 S.F.
- Class F Insulation
- Designed for 3300 ft Elevation
- 40°C Ambient
- Class B Temperature Rise
- Automatic Reset Overload
- Capacitor Start, Capacitor Run

MECHANICAL FEATURES

- Bi-Directional Rotation
- Rolled Steel Frame
- Cast Aluminum Terminal Box
- 1045 Carbon Steel Shaft
- Aluminum Die Cast Squirrel Cage Rotor Construction
- Paint System: Phenolic Rust Proof Base Plus Lacquer Top Coat
- Paint Color: Blue – Munsell 5 PB 3/8
- Double Shielded Bearings Pre-Packed with Lithium Base Grease
- No Terminals; Lead End Peel-Off Insulation
- Grounding Terminal Inside Main Box
- Stainless Steel Nameplate
- Motors are UL Recognized for United States and Canada